

A NEW SPECIES OF THE GENUS *ATTAGENUS* LATREILLE (COLEOPTERA: DERMESTIDAE: ATTAGENINAE) FROM SPAIN

Andreas Herrmann¹ & Jiří Háva²

¹Bremervörder Straße 123, 21682 Stade, Germany – herrmann@coleopterologie.de

²Private Entomological Laboratory and Collection, Únětice u Prahy 37, 25262 Praha-západ, Czech Republic
– jh.dermestidae@volny.cz

Abstract: *Attagenus* (*s. str.*) *ziegleri* n. sp. from Spain is described, illustrated and compared with the similar species *Attagenus* (*s. str.*) *multifasciatus* (Wollaston, 1863) and *Attagenus* (*s. str.*) *maritimus* (Gené, 1839).

Key words: Taxonomy, new species, Coleoptera, Dermestidae, *Attagenus*, Spain.

Zusammenfassung: *Attagenus* (*s. str.*) *ziegleri* n. sp. aus Spanien wird beschrieben und mit der ähnlichen Art *Attagenus* (*s. str.*) *multifasciatus* (Wollaston, 1863) und *Attagenus* (*s. str.*) *maritimus* (Gené, 1839) verglichen.

Resumen: Se describe e ilustra *Attagenus* (*s. str.*) *ziegleri* n. sp. de España, y se compara con las especies similares *Attagenus* (*s. str.*) *multifasciatus* (Wollaston, 1863) y *Attagenus* (*s. str.*) *maritimus* (Gené, 1839).

Palabras clave: Taxonomía, nueva especie, Coleoptera, Dermestidae, *Attagenus*, España.

Taxonomy / Taxonomía: *Attagenus* (*s. str.*) *ziegleri* n. sp.

Introduction

The dermestid species *Attagenus multifasciatus* (Wollaston, 1863) has been recorded so far from the Canary Islands as well as from the Iberian Peninsula (Portugal and Spain). Examination of the male genitalia recently done by the authors shows that the specimens from the Iberian Peninsula belong to a separate species which differs from *Attagenus multifasciatus* also in the shape of the body and the antennal club.

Abbreviations:

AHEC Private collection of Andreas Herrmann, Stade.

EW elytral width = maximum elytral width.

JHAC Private Entomological Laboratory and Collection, Jiří Háva, Prague-west.

SMNS Staatliches Museum für Naturkunde, Stuttgart, Germany.

TL total length = distance from anterior margin of pronotum to apex of elytra.

WZIC Private collection of Wolfgang Ziegler. Rondeshagen.

Attagenus (*s. str.*) *ziegleri* n. sp. Fig. 1 a-c.

HOLOTYPE (♂): Spain, Prov. Huelva, Valdechamusa, 600 m, 12.4.2002 leg. W. Ziegler. The holotype is stored in AHEC.

PARATYPES: 1 ex. (male): Spain, Prov. Huelva, Villablanca, 10.4.2002 leg. W. Ziegler (WZIC); 1 ex. (male): Spain, Córdoba, Posadas, Carretera A-431, Río Guadalquivier, 11.6.2002, leg. A. Luna (AHEC); 12 ex. (both sexes): Spain, Andalusie, env. de Ronda, 8/20.V.1956 leg. G. Fagel / *Attagenus multifasciatus* V. Kaik det 1980 (2 AHEC, 9 SMNS, 1 JHAC); 1 ex. (sex unknown): Spain, Lusit., Extremadura, S. Pedro de Muel, 28.-30.V.59 leg. Lindberg (SMNS); 1 ex. (male): Spain S, Granada distr., Prado Negro env., Sierra de Huétor N.P., 1500 m, 5.5.2003, P. Kresl lgt. (JHAC); 1 ex. (male): "Hispan." (JHAC).

ETYMOLOGY:

The name of the new species refers to the coleopterist Wolfgang Ziegler from Rondeshagen/Germany, the collector of the holotypus.

DESCRIPTION

Body elongate ovate (see fig. 1a); measurements of the holotypus: TL 2.8 mm, EW 1.7 mm.

Head broader than long, between eyes and antennae coarsely punctate, sparsely covered with procumbent long, strong brown hairs. Palpi light brown, darkened towards their edges. Ocellus present on front. Antennae 11-segmented, shaft light brown, some of the segments somewhat darkened towards their margins; the 3-segmented club is clearly distinct and much broader than the other antennomeres, the club is approximately as long as the shaft, all three segments of it are black and covered by fine pubescence. The last segment is much smaller than segment 9 and 10 (see fig. 1c).

Pronotum darkish-brown to black, wider than long, narrowed anteriorly, broadest at the apical part, quite densely punctate with the same pubescence as the head, intermixed with a very few and small spots of light brown hairs. Cuticula between the punctuation shiny. Anterior angles obtuse angled, slightly rounded, not visible from above; posterior angles rectangular with rounded edge.

Scutellum small, triangular, with a very few dark brown hairs; puncture hardly visible.

Elytra coarsely punctate. Cuticle darkish brown to black with two blurred reddish-brown horizontal fasciae, sparsely covered with the same kind of hairs as head and pronotum. Anterior fascia starting just behind the shoulders, the second fascia behind the middle of the elytrae. Elytrae also towards the apex with some diffuse brightened parts. The fasciae are sparsely covered with light brown hairs. Punctuation, pubescens and colour of the underside (mesosternum, metasternum and abdominal sternites) quite similar to the surface, the hairs somewhat longer and lighter brown.

Whole legs darkish brown, sparsely covered with long light brown hairs. Tarsae about as long as tibiae, tibiae with distinct small spines apically.

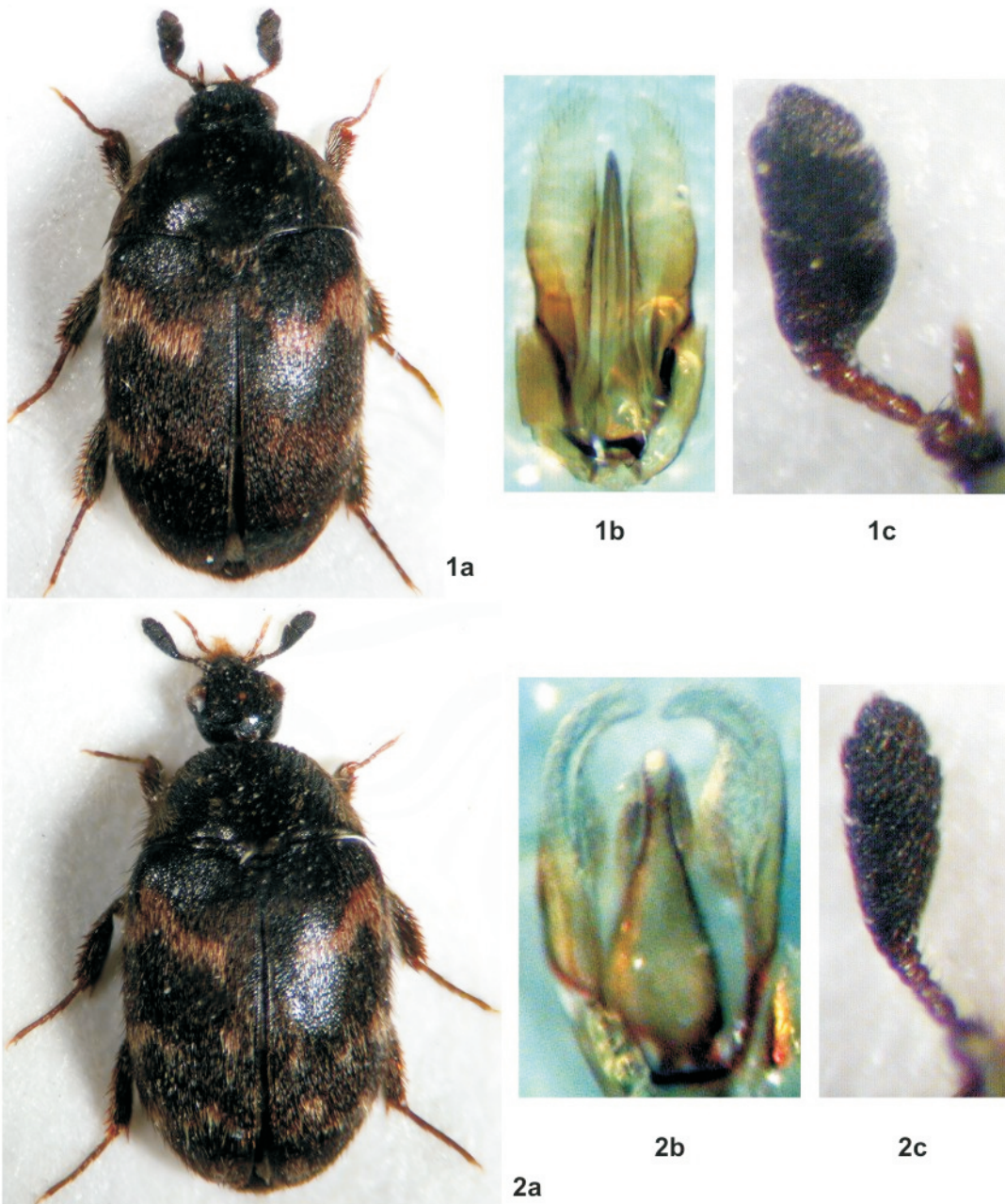


Fig. 1. *Attagenus zieglerei* n. sp.: a) male habitus, b) aedeagus, c) male antenna.

Fig. 2. *Attagenus multifasciatus* (Wollaston, 1863): a) male habitus, b) aedeagus, c) male antenna.

Male genitalia as in Fig. 1b.

Female externally quite similar to male, but the segments of the antenna club are smaller and less broad in relation to the shaft.

Variation in size: TL 2.8 – 3,0 mm, EW 1.6 – 1.9 mm.

DIFFERENTIAL DIAGNOSIS

The new species belongs to the subgenus *Attagenus* Latreille, 1802. This subgenus is distributed in the whole world and consists of almost 200 species respectively subspecies. The new species *Attagenus zieglerei* n. sp. differs from the similar looking species *Attagenus multifasciatus* as follows:

- 1 Elytrae densely covered by short grey or brown hairs, nearly unicolorous and without distinct spots or fasciae *A. maritimus* (Gené, 1839)
- Elytrae with spots or fasciae of light-brown or whitish hairs 2

- 2 Body elongate ovate, largest width of the elytrae near the shoulders. Pronotum broader in relation to its length, the segments of the male antenna club bigger and broader (Fig. 1 a-c).....*A. zieglerei* n. sp.

- Body ovate, largest width of the elytrae near their middle. Pronotum less broad in relation to its length, the segments of the male antenna club more narrow (Fig. 2 a-c).....*A. multifasciatus* (Wollaston, 1863)

Acknowledgements

The authors are indebted to Wolfgang Ziegler (Germany) and Antonio Luna (Spain) for the donation of the specimens as well as to Dr. Wolfgang Schawaller (Stuttgart/Germany) for the loan of the regarding material deposited in the SMNS.