

ARTÍCULO:

**Taste while chewing? Sensory structures in the chelicerae of *Pseudocellus pearsei* (Chamberlin & Ivie, 1938) (Ricinulei, Arachnida)**

**Giovanni Talarico & Gerd Alberti**

Ernst-Moritz-Arndt-Universität,  
Zoologisches Institut & Museum,  
J.-S.-Bach-Str. 11/12,  
Greifswald, Germany.  
e-mail: g.talarico@gmx.net  
e-mail: alberti@uni-greifswald.de

**José G. Palacios-Vargas**

Universidad Nacional Autónoma de  
México, Laboratorio de Ecología y  
Sistemática de Microartrópodos,  
Departamento de Ecología y Recursos  
Naturales,  
Ciudad de México, México.  
e-mail: jgpv@ciencias.unam.mx

**Revista Ibérica de Aracnología**

ISSN: 1576 - 9518.

Dep. Legal: Z-2656-2000.

Vol. 15, 30-VI-2007

Sección: Artículos y Notas.

Pp: 47 - 53.

Fecha publicación: 30 Abril 2008

Edita:

**Grupo Ibérico de Aracnología (GIA)**

Grupo de trabajo en Aracnología

de la Sociedad Entomológica

Aragonesa (SEA)

Avda. Radio Juventud, 37

50012 Zaragoza (ESPAÑA)

Tef. 976 324415

Fax. 976 535697

C-elect.: amelic@telefonica.net

Director: Carles Ribera

C-elect.: cribera@ub.edu

Índice, resúmenes, abstracts

vols. publicados:

<http://entomologia.rediris.es/sea/publicaciones/ria/index.htm>

Página web GIA:

<http://entomologia.rediris.es/gia>

Página web SEA:

<http://entomologia.rediris.es/sea>

ARTÍCULO:

## **Taste while chewing? Sensory structures in the chelicerae of *Pseudocellus pearsei* (Chamberlin & Ivie, 1938) (Ricinulei, Arachnida)**

Giovanni Talarico, José G. Palacios-Vargas & Gerd Alberti

### **Abstract**

Ricinulei possess two jointed chelate chelicerae to grab, kill and to chew up their prey. The chelicerae of the Mexican cave dwelling species *Pseudocellus pearsei* were investigated by means of scanning and transmission electron microscopy. The movable and fixed fingers of the chelicerae bear numerous blunt tipped teeth. Single fine pores are present on the long distal tips of the finger and also on their shorter teeth. Furthermore, flat oval depressions can be observed near the articulation of the movable finger. Sections of the fingers reveal their multiple innervation. Ensheathed outer dendritic segments project into the teeth. Since muscles are absent inside the fingers a motor neuronal function of this innervation can be excluded and a sensorial function has to be presumed. Ensheathed outer dendritic segments projecting towards single terminal pores characterize arthropod chemoreceptors with gustatory function.

**Key words:** Arthropoda, Arachnida, Ricinulei, *Pseudocellus*, Ultrastructure, Chelicera, Sensilla, México

### **¿Degustando mientras se mastica? Estructuras sensoriales en los quelíceros de *Pseudocellus pearsei* (Chamberlin & Ivie, 1938) (Ricinulei, Arachnida)**

### **Resumen**

Los ricinúlidos tienen dos quelíceros biarticulados utilizados para coger, matar y masticar a sus presas. Por medio del microscopio electrónico de barrido y del de transmisión se investigó su morfología y anatomía en la especie cavernícola mexicana *Pseudocellus pearsei*. Los dedos móvil y fijo de los quelíceros poseen numerosos dientes gruesos en su ápice. También presentan finos poros aislados en los alargados ápices de los dedos y en sus cortos dientes. Además se pueden observar depresiones aplanadas ovales cerca de la articulación del dedo móvil. Los cortes de los dedos revelan su innervación múltiple. Unos segmentos dendríticos envainados se proyectan dentro de los dientes. Ya que en los dedos no hay músculos, se puede excluir para esta innervación una función neuromotora y se puede suponer una función sensorial. Los segmentos dendríticos envainados que se proyectan hacia una simple terminación porosa son característicos de quimiorreceptores de artrópodos con función gustativa.

**Palabras clave:** Arthropoda, Arachnida, Ricinulei, *Pseudocellus*, Ultraestructura, Quelíceros, Sensilla, México

## Introduction

Arachnid sensilla have been investigated for a long time. In particular, numerous different types of sensilla are described for the pedipalps and walking legs (e.g., Haller, 1881; Blumenthal, 1935; Chu-Wang & Axtell, 1974; Barth & Stagl, 1976; Baker, 1985; Foelix, 1985; Alberti & Coons, 1999; Coons & Alberti, 1999). Unlike that, the knowledge of sensilla occurring on arachnid chelicerae is surprisingly poor, though, these extremities, as essential mouthparts, get in intense contact with the prey and its body liquids. The presence of sensorial innervation inside the cheliceral digits is known for some Acari (e.g., Nuzzaci & De Lillo, 1991, 1995; Alberti & Coons, 1999; Coons & Alberti, 1999; De Lillo et al., 2001; Nuzzaci & Di Palma, 2002; Alberti et al., 2004).

Ricinuleids, with only 58 extant species, are one of the least investigated arachnid orders. This small order, consisting of the genera *Cryptocellus* Westwood, 1874, *Pseudocellus* Platnick, 1980 and *Ricinoides* Ewing, 1929, is exclusively distributed in the tropical regions of Central America and Western Africa. Only few works present ultrastructural aspects of these animals (Legg, 1976, 1977; Platnick & Shadab, 1976, 1977; Dumitresco & Juvara-Bals, 1977; Alberti & Palacios-Vargas, 1984; Harvey, 1984; Ludwig & Alberti, 1990; Ludwig et al., 1994; Adis et al., 1999; Talarico et al., 2005, 2006). Ricinulei do not possess poisonous glands (Moritz, 1993). Assisted by the pedipalps and the hood like cucullus, ricinuleids grasp their prey with the chelicerae and immediately start to chew and feed on it, while it is still alive (Pollock, 1967; own observations). The movable and fixed digits of ricinuleid chelicerae bear numerous blunt tipped teeth. The morphology and location of these cheliceral teeth may be useful for species identification (Cooke & Shadab, 1973).

In this study the cheliceral digits of the Mexican cave dwelling species *Pseudocellus pearsei* (Chamberlin & Ivie, 1938) were investigated by means of scanning and transmission electron microscopy.

## Material and methods

Specimens of *P. pearsei* from the Yucatan peninsula (México) were collected in the caves Gruta Actún Chen, Gruta X-Caret (both Quintana Roo) and Gruta Sabac-Ha (Yucatán).

For scanning electron microscopy (SEM), specimens stored in ethanol (70%) were dehydrated in graded ethanols, critical-point dried (BAL-TEC CPD 030), fixed to aluminium stubs with adhesive film and coated with gold-palladium (Quorum Technologies SC7620). The chelicerae of four specimens (1 tritonymph, 1 adult male and 2 adult females) were examined with a LEO DSM 940A.

For transmission electron microscopy (TEM), one deutonymph was dissected in ice-cold 0.1 M Sørensen phosphate buffer (pH 7.4), fixed in 3.5% glutaraldehyde buffered in Sørensen phosphate buffer overnight

and then postfixed in buffered 2% osmium tetroxide for 2 h. After rinsing in buffer and dehydration in graded ethanols, samples were embedded in Spurr's medium (Spurr, 1969). Longitudinal ultrathin sections (50-70 nm) were made from the prosoma with a Diatome diamond knife on a Leica Ultracut. After staining the sections with saturated uranyl acetate (in 70% methanol) for 5 minutes and with lead citrate (Reynolds, 1963) for 15 minutes, the sections were examined with a Philips CM 10.

## Results

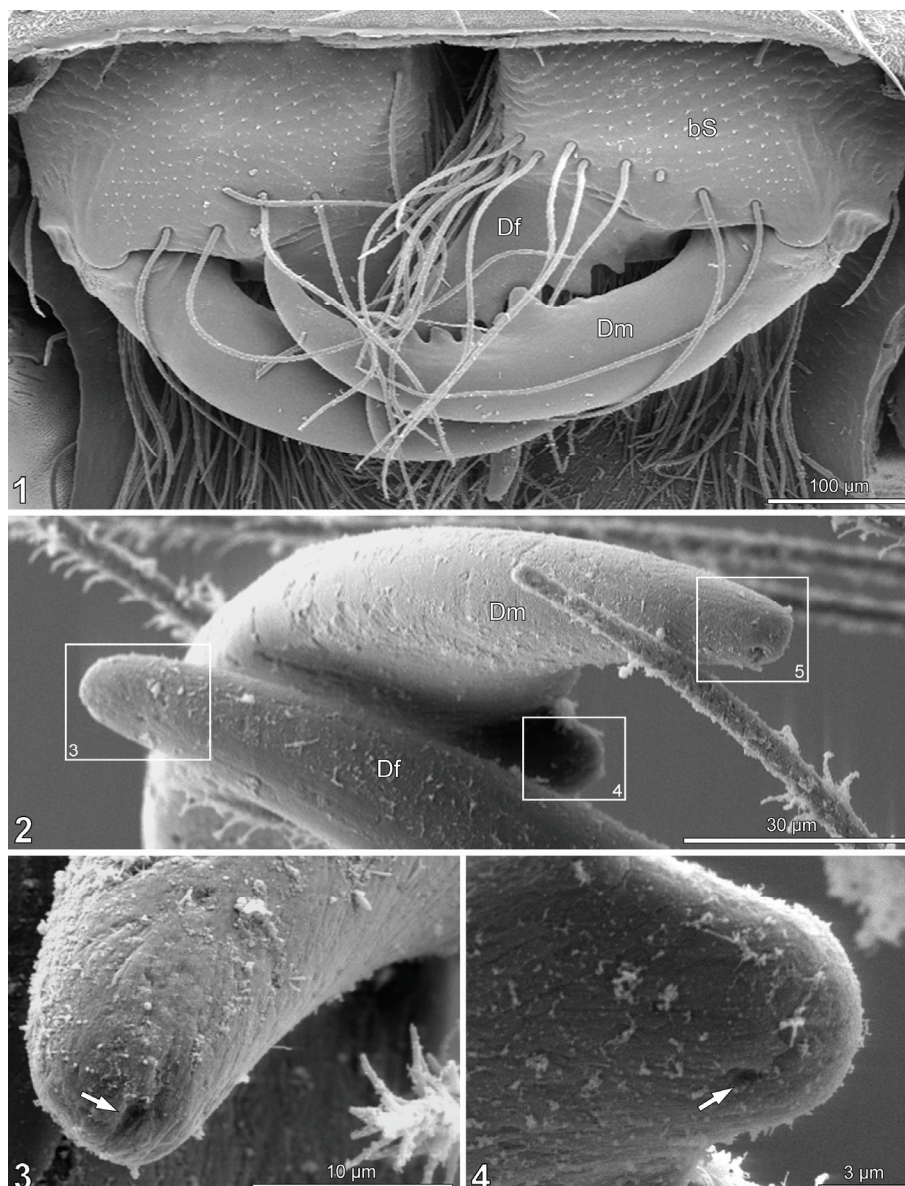
Like all Ricinulei *P. pearsei* possesses two jointed chelate chelicerae (Fig. 1). When withdrawn and the cucullus is closed, the chelicerae are completely covered by the cucullus. When protruded or the cucullus is lifted up, the chelicerae become visible (Fig. 9). The chelicerae are orientated horizontally (Fig. 1). The fixed digit (length 0.24 mm) projects in retrolateral direction from the retrolateral region of the basal segment. On the lateral region of the basal segment, the movable digit (length 0.4 mm) is articulated. The fixed digit is slightly curved towards the movable digit, while the latter is strongly curved towards the fixed digit. The tip of the movable digit crosses the tip of the fixed digit dorsally when the chelicera is closed (Fig. 1).

Both, movable and fixed, cheliceral digits bear a single row of blunt tipped teeth of different size (Figs. 1, 6). The tips of the cheliceral teeth of *P. pearsei* often show traces of abrasion (Figs. 3-8). The degree of abrasion determines the shape and size of the teeth (Fig. 6). Higher magnifications reveal the presence of single fine pores on the long distal tips of the digits (Figs. 2, 3, 5) and also on their shorter teeth (Figs. 4, 6-8). The diameter of these pores (0.75-2  $\mu\text{m}$ ) varies according to the degree of abrasion. Furthermore, flat oval depressions can be observed on the basal segment of the chelicerae near the articulation of the movable digit (Figs. 9, 10).

Sections of the basal part of the cheliceral digits reveal the presence of multiple innervations (Fig. 11, 16). Up to eleven nerves, each composed of several inner dendritic segments are present inside the digit. The nerves are surrounded by enveloping glial cells, which are connected among each other via septate junctions (Fig. 12). Further distally, basal bodies appear inside the inner dendritic segments and numerous microvilli can be observed close to the inner dendritic segments (Fig. 13). Starting with the basal bodies, groups of outer dendritic segments (Figs. 14-18) are formed. Each group is surrounded by an electron dense dendritic sheath (Figs. 14-18) which is produced by a sheath cell. Single groups of outer dendritic segments, surrounded by dendritic sheaths, project towards the cheliceral cuticle and also penetrate the integument to enter the cheliceral teeth (Fig. 18).

## Discussion

Ricinuleid chelicerae had been of taxonomic interest for

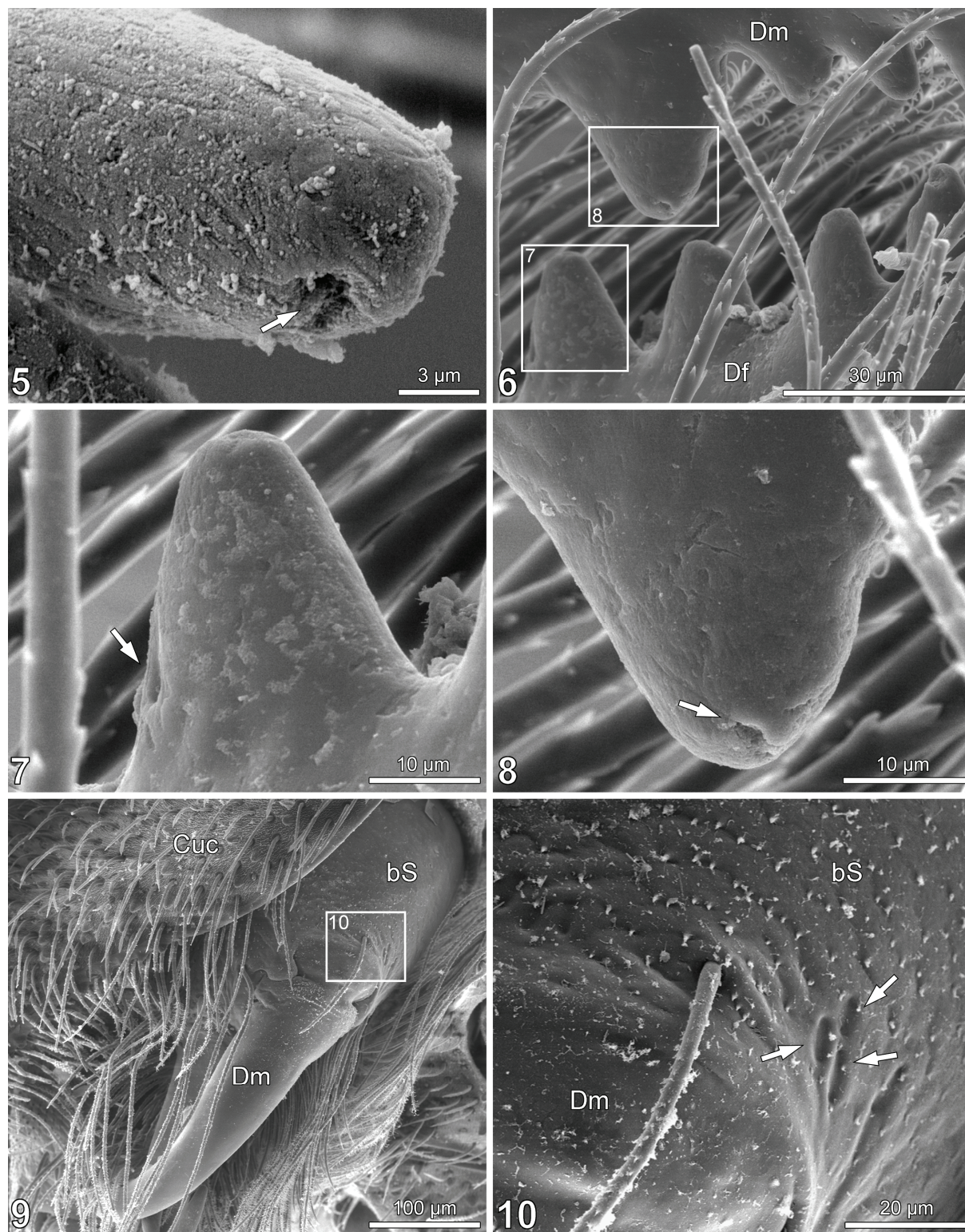


**Figures 1-4.** SEM of chelicerae of different developmental stages of *Pseudocellus pearsei*. **1.** Frontal view on the withdrawn chelicerae of an adult male. The cucullus has been removed. **2.** Distal tips of right chelicera of a male tritonymph (medioventral view). Frames indicate subsequent pictures of details. **3.** Distal tip of the fixed finger. Note the apical pore opening (arrow). **4.** First median tooth of the movable finger. Note the lateral pore opening (arrow). bS = basal segment, Df = fixed finger (Digitus fixus), Dm = movable finger (Digitus mobilis).

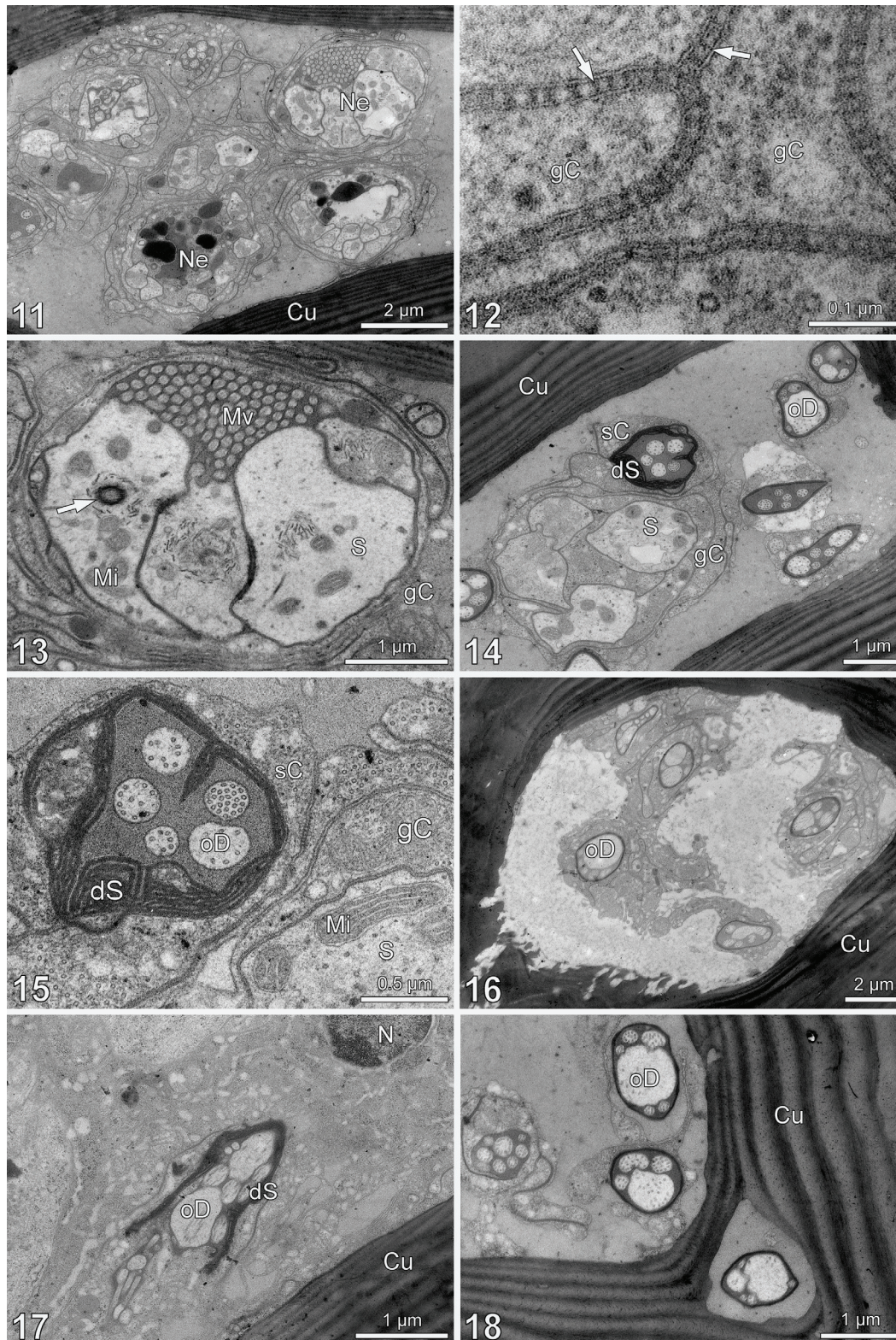
a long time (Cooke & Shadab, 1973). Since dissimilarities between different developmental stages and also between left and right chelicerae of the same individual had been recovered (Pittard & Mitchell, 1972), the value of this character became doubtful. Functional interpretations of the cheliceral morphology focused on the long plumose setae (see Figs. 1, 9), which arise dorsally and ventrally from the apical region of the basal segment and which are thought to support the transport of the prey's body liquids towards the preoral cavity (Hansen & Sørensen, 1904; Pittard & Mitchell, 1972).

The present study provides the first ultrastructural investigation on the cheliceral digits of Ricinulei. The presence of multiple innervations inside the cheliceral digits (Figs. 11, 14, 16, 18) and the presence of single terminal pores on the tips of the cheliceral teeth (Figs. 2-8) has been revealed. Since muscles are absent inside the cheliceral digits (Figs. 11, 14, 16, 18) a motor neuronal function of this innervation can be excluded and a sensorial function has to be presumed. Single terminal

pores (Figs. 2-8) and ensheathed outer dendritic segments (Figs. 14-18) projecting towards these pores are typical characters of arthropod contact chemoreceptors with gustatory function (Foelix & Chu-Wang, 1973; Altner, 1977). On the extremities of arthropods (e.g., antennae, pedipalps and walking legs) these gustatory sensilla often appear as long, slender and sigmoidally curved setae. In Ricinulei this type is known for the distal tarsomeres of the walking legs (Talarico et al., 2006). Taste sensory organs located in the cheliceral digits are known from well studied Acari, e.g., Ixodida, Gamasida, Actinedida and Oribatida (e.g., Nuzzaci & De Lillo, 1989, 1991, 1995; Alberti & Coons, 1999; Coons & Alberti, 1999; De Lillo et al., 2001; Nuzzaci & Di Palma, 2002; Alberti et al., 2004). The findings in *P. pearsei* resemble widely the sensorial structures inside the chelicerae of the investigated Acari. Other Arachnida are barely investigated in this respect, though it appears likely that sensorial organs could be present on and inside the chelicerae because they get in intense



**Figures 5-10.** SEM of chelicerae of different developmental stages of *Pseudocellus pearsei*. **5.** Distal tip of the movable finger of a male tritonymph. Note the lateral pore opening (arrow). **6.** Median teeth of left chelicera of an adult female (dorsal view). Frames indicate subsequent pictures. **7.** Largest median tooth of the fixed finger. Note the basolateral pore opening (arrow). **8.** Largest median tooth of the movable finger. Note the apical pore opening (arrow). **9.** Lateral view on left chelicera of an adult female. Frame indicates the subsequent picture. **10.** Detail of the joint area. Note three flat oval depressions (arrows). bS = basal segment, Cuc = cucullus, Df = fixed finger (Digitus fixus), Dm = movable finger (Digitus mobilis).



**Figures 11-18.** TEM of the left chelicera of a deutonymph of *Pseudocellus pearsei*. **11.** Transversal section of the basal portion of the movable finger showing numerous nerves inside the finger. **12.** Septate junctions (arrows) connect the glial cells which envelope the nerves. **13.** Nerve consisting of four inner dendritic segments of sensory cells. Note the basal body (arrow) indicating the formation of an outer dendritic segment (cilium). **14.** In the apical part of the movable finger outer dendritic segments surrounded by dense dendritic sheaths are present. **15.** A group of outer dendritic segments. The dendritic sheath is formed by the sheath producing cell. The shape of the sheath is somewhat irregular indicating that the formation of this dendritic sheath has just begun. **16.** Transverse section of the apical part of the fixed finger. **17.** Oblique section of a dendritic sheath surrounding a group of outer dendritic segments inside the fixed finger. **18.** One dendritic sheath containing several outer dendritic segments is penetrating the cuticle on the base of a median tooth of the movable finger of the chelicera. Cu = cuticle, dS = dendritic sheath, gC = glial cell, Mi = mitochondrion, Mv = microvilli, N = nucleus, Ne = nerve, oD = outer dendritic segment, S = sensory cell, sC = sheath-producing cell.

contact with the preys body liquids. The poor knowledge about the internal structures inside the chelicerae might be explained with the extraordinarily hard cuticle of the digits, which hinders the penetration of fixatives and also complicates ultrathin sectioning. The flat oval depressions near the base of the movable digit represent slit sensory organs with mechanoreceptive function (Lindquist, 1984) which also can be found on other body parts of Ricinulei (Talarico et al., 2006).

Concluding, we believe that by means of the gustatory sensilla, Ricinulei are able to evaluate the quality of their food. Furthermore, on the base of the findings for Acari and Ricinulei, we suppose that gustatory sensilla inside the cheliceral digits may be a general feature of arachnids, though this has to be proofed for other orders.

### Acknowledgements

The authors express thanks to Mrs. A. Klann and Mr. P. Michalik for their comments and support. G. T. also thanks Dr. R. Dallai, Mrs. F. Giusti, Dr. V. Vignoli and their colleagues at the Department of Evolutionary Biology, Siena for their generous help and kind hospitality and the opportunity to use their facilities. G. A. wishes to express his thanks to Mr. V.D. Dominguez who helped as a guide when collecting in the Sabac-Ha cave. Some specimens of *P. pearsei* from Yucatán Peninsula were collected and donated to J.G. P.-V. by Mrs. J. Lips. All authors appreciate the technical assistance of Mr. H. Fischer and Mr. E. Paccagnini. G. T., J.G. P.-V. and G. A. remember M. Fuentes Silva who died in April 2004 during research in one cave of the State of Puebla, México. This work was supported by the German Academic Exchange Service (DAAD; VIGONI Project) and the German Research Foundation (DFG; Al 138/13-1).

### References

- ADIS, J.U., B. MESSNER & N.I. PLATNICK. 1999. Morphological structures and vertical distribution in the soil indicate facultative plastron respiration in *Cryptocellus adisi* (Arachnida, Ricinulei) from Central Amazonia. *Studies on Neotropical Fauna & Environment*, **34**: 1-9.
- ALBERTI, G. & L.B. COONS. 1999. Acari: Mites. In: *Microscopic Anatomy of Invertebrates*. Vol 8C: Chelicerate Arthropoda. F. W. Harrison & R. F. Foelix (eds). Wiley-Liss. New York, Chichester. 515-1215.
- ALBERTI, G. & J.G. PALACIOS-VARGAS. 1984. Fine structure of spermatogenesis and mature spermatozoa in *Cryptocellus boneti* Bolívar y Pielain, 1941 (Arachnida, Ricinulei). *Journal of Ultrastructure Research*, **87**: 1-12.
- ALBERTI, G., A. SENICZAK, P. MICHALIK & S. SENICZAK. 2004. Feinstrukturelle Aspekte des Gnathosomas von *Archezogozetes longisetosus* Aoki, 1965 (Oribatida: Trhypochthoniidae). *Abhandlungen und Berichte des Naturkundemuseums Görlitz*, **76**: 5-15.
- ALTNER, H. 1977. Insektensensillen: Bau und Funktionsprinzipien. *Verhandlungen der Deutschen Zoologische Gesellschaft*, **70**: 139-153.
- BAKER, G.T. 1985. Morphology of the solenidia and famulus on tarsi I and II of *Rhizoglyphus robini* Calaparède (Acaridae). *Zoologisches Jahrbuch, Abteilung für Anatomie*, **113**: 85-89.
- BARTH, F.G. & J. STAGL. 1976. The slit sense organs of arachnids. *Zoomorphologie*, **86**: 1-23.
- BLUMENTHAL, H. 1935. Untersuchungen über das "Tarsalorgan" der Spinnen. *Zeitschrift für Morphologie und Ökologie der Tiere*, **29**: 667-719.
- CHU-WANG, I. & R.C. AXTELL. 1974. Fine structure of ventral and lateral tarsal sensilla of the hard tick, *Amblyomma americanum*. *Annals of the Entomological Society of America*, **67**: 453-457.
- COOKE, J.A.L. & M.U. SHADAB. 1973. New and little known ricinuleids of the genus *Cryptocellus* (Arachnida, Ricinulei). *American Museum Novitates*, **2530**: 1-25.
- COONS, L.B. & G. ALBERTI. 1999. Acari: Ticks. In: *Microscopic Anatomy of Invertebrates*. Vol 8B: Chelicerate Arthropoda. F. W. Harrison & R. F. Foelix (eds). Wiley-Liss. New York, Chichester. 267-514.
- DE LILLO, E., A. DI PALMA & G. NUZZACI. 2001. Morphological adaptations of mite chelicerae to different trophic activities (Acari). *Entomologica, Bari*, **35**: 125-180.
- DUMITRESCO, M. & I. JUVARA-BALS. 1977. Quelques détails de morphologie tégumentaire chez *Cryptocellus cubanicus* Dumitresco, Juvara. *Résultats des Expéditions Biospéologiques cubano-roumaines à Cuba 2*: 145-146.
- FOELIX, R.F. 1985. Mechano- and chemoreceptive sensilla. In: *Neurobiology of Arachnids*. F. G. Barth (ed) Springer-Verlag. Berlin, Heidelberg, New York. 118-137.
- FOELIX, R.F. & I. CHU-WANG. 1973. The morphology of spider sensilla: II. Chemoreceptors. *Tissue & Cell*, **5**: 461-478.
- HALLER, G. 1881. Vorläufige Bemerkungen über das Gehörorgan der Ixodiden. *Zoologischer Anzeiger*, **4**: 165-167.
- HANSEN, H.J. & W. SØRENSEN. 1904. The order Ricinulei. In: *On two Orders of Arachnida*. H. J. Hansen & W. Sørensen (eds). Cambridge University Press. Cambridge. 114-157.
- HARVEY, M.S. 1984. The female of *Ricinoides westermanni* (Guérin-Méneville), with notes on those of *R. afzelii* (Thorell) and *R. karschii* (Hansen & Sørensen) (Ricinulei). *Bulletin of the British Arachnological Society*, **6**: 205-210.
- LEGG, G. 1976. The external morphology of immature stages of *Ricinoides karschi* (Arachnida, Ricinulei). *Bulletin of the British Arachnological Society*, **3**: 243-248.
- LEGG, G. 1977. Sperm transfer and mating in *Ricinoides hansenii* (Ricinulei: Arachnida). *Journal of Zoology*, London, **182**: 51-61.
- LINDQUIST, E.E. 1984. Current theories on the evolution of major groups of Acari and on their relationships with

- other groups of Arachnida, with consequent implications for their classification. In: *Acarology* VI, Vol. 1. Griffiths, D.A. & Bowman, C.E. (eds). Ellis Horwood Ltd., Chichester. 28-62.
- LUDWIG, M. & G. ALBERTI. 1990. Peculiarities of arachnid midgut glands. *Acta Zoologica Fennica*, **190**: 255-259.
- LUDWIG, M., J.G. PALACIOS-VARGAS & G. ALBERTI. 1994. Cellular details of the midgut of *Cryptocellus boneti* (Arachnida: Ricinulei). *Journal of Morphology*, **220**: 263-270.
- MORITZ, M. 1993. Überklasse Chelicerata, Fühlerlose. In: *Lehrbuch der speziellen Zoologie/ Band I: Wirbellose Tiere/ 4. Teil: Arthropoda (ohne Insecta)*. H.-E. Gruner (ed) Gustav Fischer Verlag. Stuttgart, Jena, New York. 73-442.
- NUZZACI, G. & E. DE LILLO. 1989. Contributo alla conoscenza dello gnatosoma degli Acari Tenuipalpidi (Tetranychoida: Tenuipalpidae). *Entomologica, Bari*, **24**: 1-32.
- NUZZACI, G. & E. DE LILLO. 1991. Fine structure and functions of the mouthparts involved in the feeding mechanisms in *Tetranychus urticae* Koch (Tetranychoida: Tetranychidae). In: *Modern Acarology*. F. Dusbábek & V. Bukva (eds). Academia, Prague and SPB Academic Publishing bv. The Hague. 301-302.
- NUZZACI, G. & E. DE LILLO. 1995. Functional morphology of the mouthparts of *Varroa jacobsoni* Oudemans female (Acari: Varroidae). In: *Proceedings of the 2nd EURAAC Symposium*, Krynica (Poland). D. Kropczynska, J. Boczek & A. Tomczyk (eds). 79-89.
- NUZZACI, G. & A. DI PALMA. 2002. Mouthparts of a tydeid mite: an ultrastructural and functional investigation. *Entomologica, Bari*, **36**: 71-91.
- PITTARD, K. & R.W. MITCHELL. 1972. Comparative morphology of the life stages of *Cryptocellus pearsei* (Arachnida, Ricinulei). *Graduate Studies of the Texas Tech University*, **1**: 3-77.
- PLATNICK, N.I. & M.U. SHADAB. 1976. On colombian *Cryptocellus* (Arachnida, Ricinulei). *American Museum Novitates*, **2605**: 1-8.
- PLATNICK, N.I. & M.U. SHADAB. 1977. On amazonian *Cryptocellus* (Arachnida, Ricinulei). *American Museum Novitates*, **2633**: 1-17.
- POLLOCK, J. 1967. Notes on the biology of Ricinulei (Arachnida). *Journal of the West African Science Association*, **12**: 19-22.
- REYNOLDS, E.S. 1963. The use of lead citrate at high pH as an electron-opaque stain in electron microscopy. *Journal of Cell Biology*, **17**: 208-212.
- SPURR, A.R. 1969. A low-viscosity epoxy resin embedding medium for electron microscopy. *Journal of Ultrastructure Research*, **26**: 31-43.
- TALARICO, G., J.G. PALACIOS-VARGAS, M. FUENTES SILVA & G. ALBERTI. 2005. First ultrastructural observations on the tarsal pore organ of *Pseudocellus pearsei* and *P. boneti* (Arachnida, Ricinulei). *Journal of Arachnology*, **33**: 604-612.
- TALARICO, G., J.G. PALACIOS-VARGAS, M. FUENTES SILVA & G. ALBERTI. 2006. Ultrastructure of tarsal sensilla and other integument structures of two *Pseudocellus* species (Arachnida, Ricinulei). *Journal of Morphology*, **267**: 441-463.

